

PARTS LIST FOR

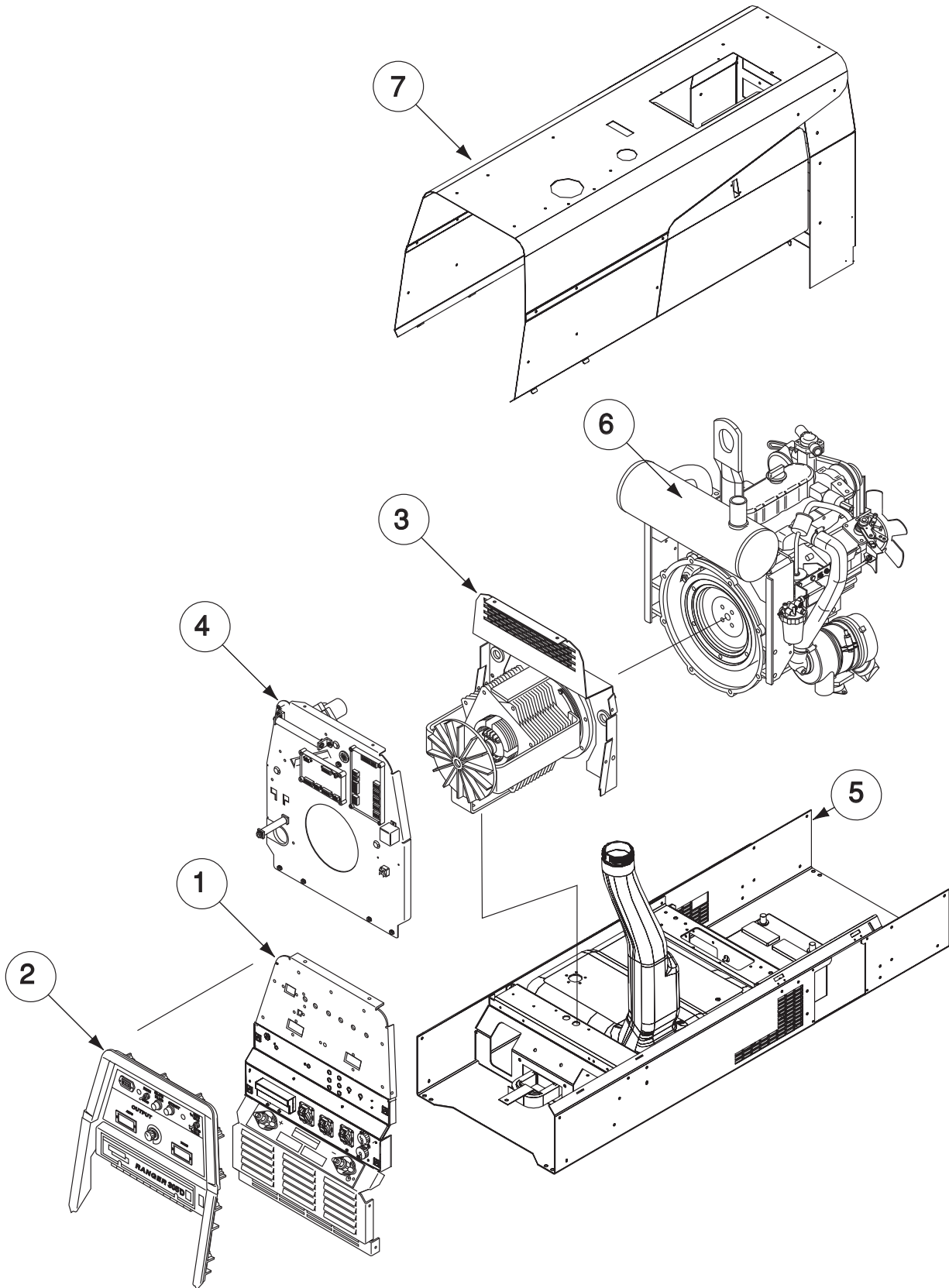
RANGER® 305D (CE)

Index of Sub Assemblies
Illustration of Sub Assemblies
Index of Sub Assemblies
Illustration of Sub Assemblies
Index of Sub Assemblies
Illustration of Sub Assemblies
Index of Sub Assemblies
Illustration of Sub Assemblies

RANGER® 305D (CE)



ILLUSTRATION OF SUB-ASSEMBLIES



Index of Sub Assemblies

RANGER® 305D (CE)

For Codes: 11122, 11123, 11189, 11190, 11314, 11315, 11458, 11459 & 11587

Do Not use this Parts List for a machine if its code number is not listed. Contact the Service Department for any code numbers not listed.

Use the Illustration of Sub-Assemblies page and the table below to determine which sub assembly page and column the desired part is located on for your particular code machine.

Sub Assembly Item No.		1	2	3	4	5	6	7	
SUB ASSEMBLY PAGE NAME	Optional Equipment	Case Front Assembly	Control Panel Assembly	Stator Rotor Assembly	Blower Baffle Assembly	Base, Fuel Tank, Battery Assembly	Engine Assembly	Covers & Case Back Assembly	
PAGE NO.	P-494-B.1	P-494-C	P-494-D	P-494-E	P-494-F	P-494-G	P-494-H	P-494-J	
CODE NO.									
11122 (CE UK)		1	1	1	1	1	1	1	
11123 (CE Euro)		2	2	1	1	1	1	2	
11189 (CE UK)		1	1	1	1	1	2	3	
11190 (CE Euro)		2	2	1	1	1	2	4	
11314 (CE UK)		1	3	1	1	2	3	5	
11315 (CE Euro)		2	4	1	1	2	3	6	
11458 (CE UK)		3	3	1	2	2	4	7	
11459 (CE Euro)		4	4	1	2	2	4	8	
11587 (CE)		5	5	1	2	2	4	9	

OPTIONAL EQUIPMENT LISTING

Miscellaneous Options Available for your machine are listed below:

Indicates a change this printing.

DESCRIPTION	PART NUMBER
Accessory Package	Order K704
Spark Arrestor (Not required for codes above 11190)	Order K1898-1
Remote Output Control (7.6m)	Order K857
Remote Output Control (30.5m)	Order K857-1



Index of Sub Assemblies

NOTES

Index of Sub Assemblies

Index of Sub Assemblies

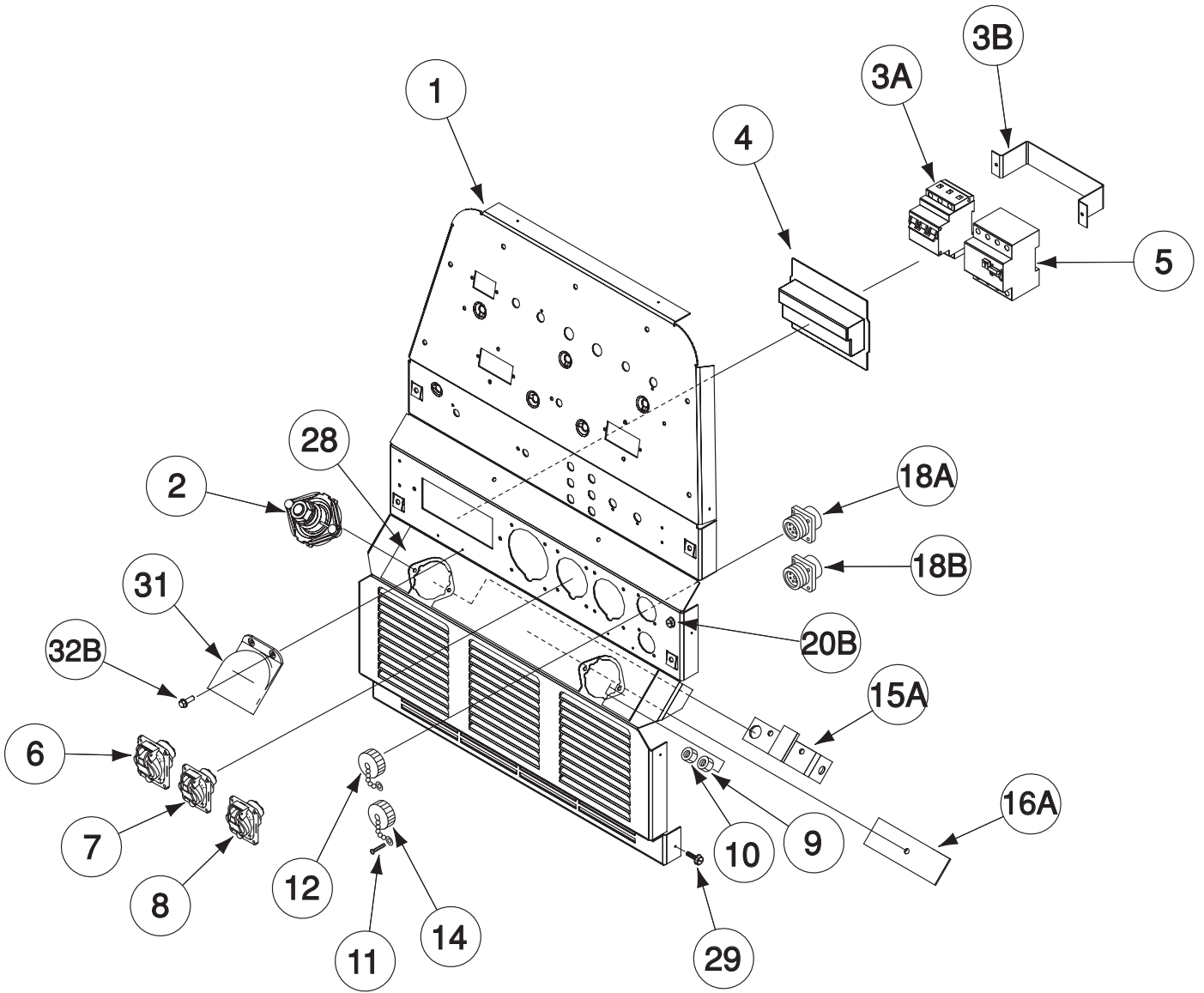
Index of Sub Assemblies

Index of Sub Assemblies

RANGER® 305D (CE)



Case Front Assembly



Index of Sub Assemblies
 Part Numbers
 Index of Sub Assemblies
 Part Numbers
 Index of Sub Assemblies
 Part Numbers
 Index of Sub Assemblies
 Part Numbers

Indicates a change this printing.

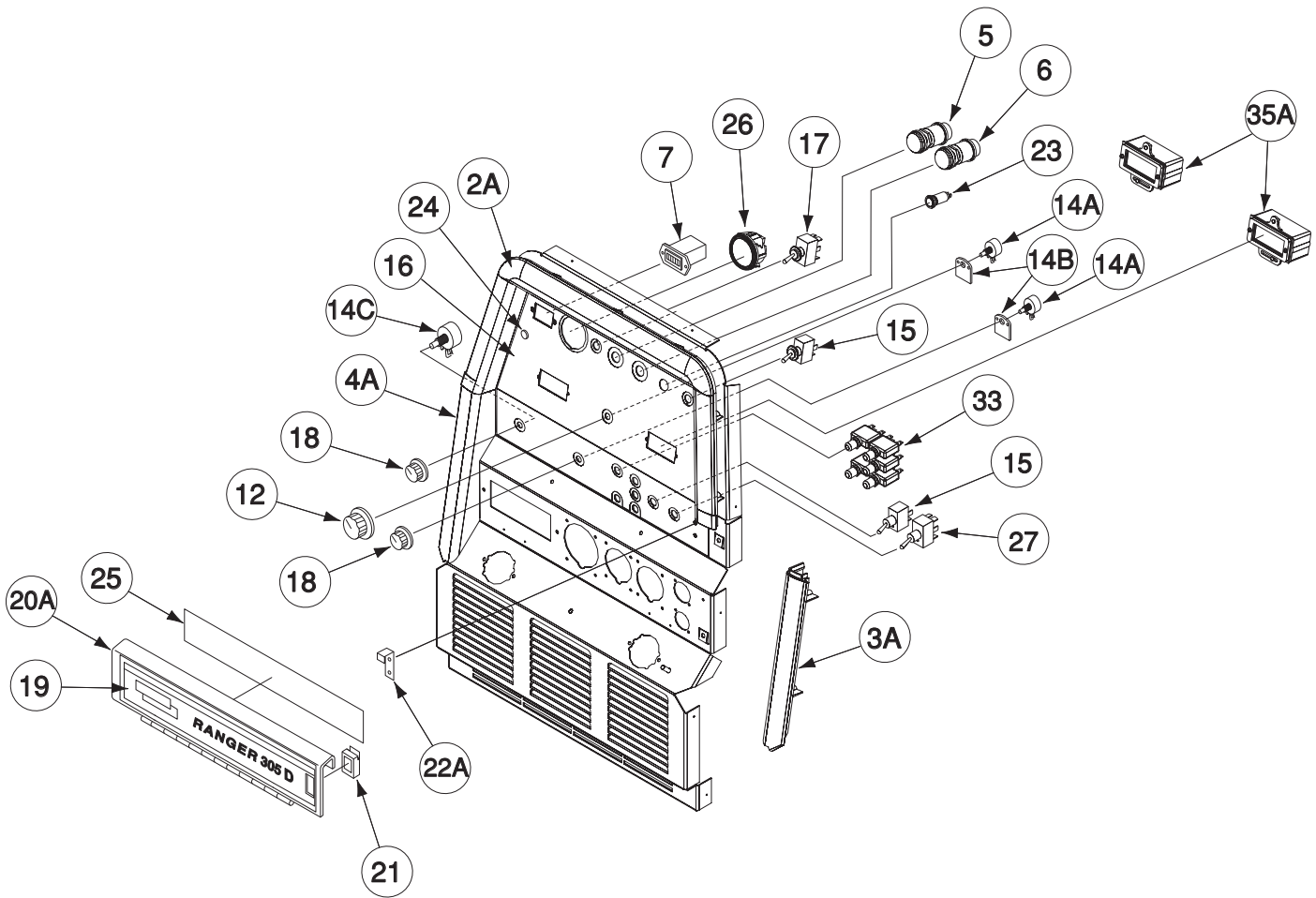
Use only the parts marked "x" in the column under the heading number called for in the model index page.

ITEM	DESCRIPTION	PART NO.	QTY.	1	2	3	4	5	6	7	8	9
1	Case Front	G3860-6	1	X	X	X	X	X				
2	Output Terminal Kit	T14166-9	2	X	X	X	X	X				
3A	3 Phase Circuit Breaker	M20194	1	X	X	X	X	X				
3B	Mounting Bracket	S25593	1	X	X	X	X	X				
3C	Mounting Plate (Not Shown)	S25592	1	X	X	X	X	X				
3D	Thread Forming Screw (Not Shown)	S9225-63	2	X	X	X	X	X				
3D	Lock Washer (Not Shown)	E106A-1	2	X	X	X	X	X				
3F	#10-24 HN (Not Shown)	CF000010	2	X	X	X	X	X				
4	Circuit Breaker Boot	S24911-1	1	X	X	X	X	X				
5	Residual Current Device (RCD)	M20193	1	X	X	X	X	X				
6	Receptacle, 400V (Eur)	M20152-4	1	X	X	X	X	X				
7	Receptacle, 230V (Eur)	M20152-3	1	X	•	X	•	X				
7	Receptacle, 230V (Eur)	M20152-3	2	•	X	•	X	•				
8	Receptacle, 115V (UK)	M20152-2	1	X	•	X	•	X				
9	#10-24 HLN	T9187-1	1	X	X	X	X	X				
10	1/4-20 HN	CF000017	1	X	X	X	X	X				
11	Thread Forming Screw	S8025-96	4	X	X	X	X	X				
12	Connector Cap	S17062-3	1	X	X	X	X	X				
14	Connector Cap	S17062-2	1	X	X	X	X	X				
15A	Shunt & Lead Assembly	S24097-3	1	X	X	X	X	X				
15B	1/2-13 x .875 HHCS (Not Shown)	CF000344	2	X	X	X	X	X				
15C	Plain Washer (Not Shown)	S9262-1	2	X	X	X	X	X				
15D	Lock Washer (Not Shown)	E106A-15	2	X	X	X	X	X				
16A	RF-Bypass Filter Assembly	S24982	1	X	X	X	X	X				
16B	Flat Washer (Not Shown)	S9262-27	1	X	X	X	X	X				
16C	Lock Washer	E106A-1	1	X	X	X	X	X				
16D	#10-24 HN	CF000010	1	X	X	X	X	X				
17	Harness Assembly (Not Shown)	G4244-3	1	X	X	•	•	•				
17	Harness Assembly (Not Shown)	G4244-5	1	•	•	X	X	X				
18	Connector & Lead Assembly, Includes:	M19685-3	1	X	X	•	•	•				
18	Connector & Lead Assembly, Includes:	M19685-19	1	•	•	X	X	X				
18A	Connector	S12021-68	1	X	X	X	X	X				
18B	Connector	S12021-70	1	X	X	X	X	X				
20A	Ground Screw Assembly Ref.	S18922-5	3	X	X	X	X	X				
20B	Thread Forming Screw	S9225-76	3	X	X	X	X	X				
20C	Plain Washer (Not Shown)	S9262-27	6	X	X	X	X	X				
20D	#10-24 HN (Not Shown)	CF000010	6	X	X	X	X	X				
20E	Lock Washer (Not Shown)	E106A-1	3	X	X	X	X	X				
20F	Lock Washer (Not Shown)	T9695-1	3	X	X	X	X	X				
28	Rating Plate	G4578-2	1	X	•	X	•	•				
28	Rating Plate	G4579-2	1	•	X	•	X	•				
28	Rating Plate	G6435-2	1	•	•	•	•	X				
29	Thread Forming Screw (Cutting)	S9225-68	4	X	X	X	X	X				
31	Output Stud Cover	M20007	2	X	X	X	X	X				
32A	Output Stud Cover Plate	S25669	2	X	X	X	X	X				
32B	Thread Forming Screw	S9225-66	4	X	X	X	X	X				



Index of Sub Assemblies
 Sub Assembly Illustration
 Index of Sub Assemblies
 Sub Assembly Illustration
 Index of Sub Assemblies
 Sub Assembly Illustration
 Index of Sub Assemblies
 Sub Assembly Illustration

Control Panel Assembly



Index of Sub Assemblies

Part Numbers

Index of Sub Assemblies

Part Numbers

Index of Sub Assemblies

Part Numbers

Index of Sub Assemblies

Part Numbers

Indicates a change this printing.

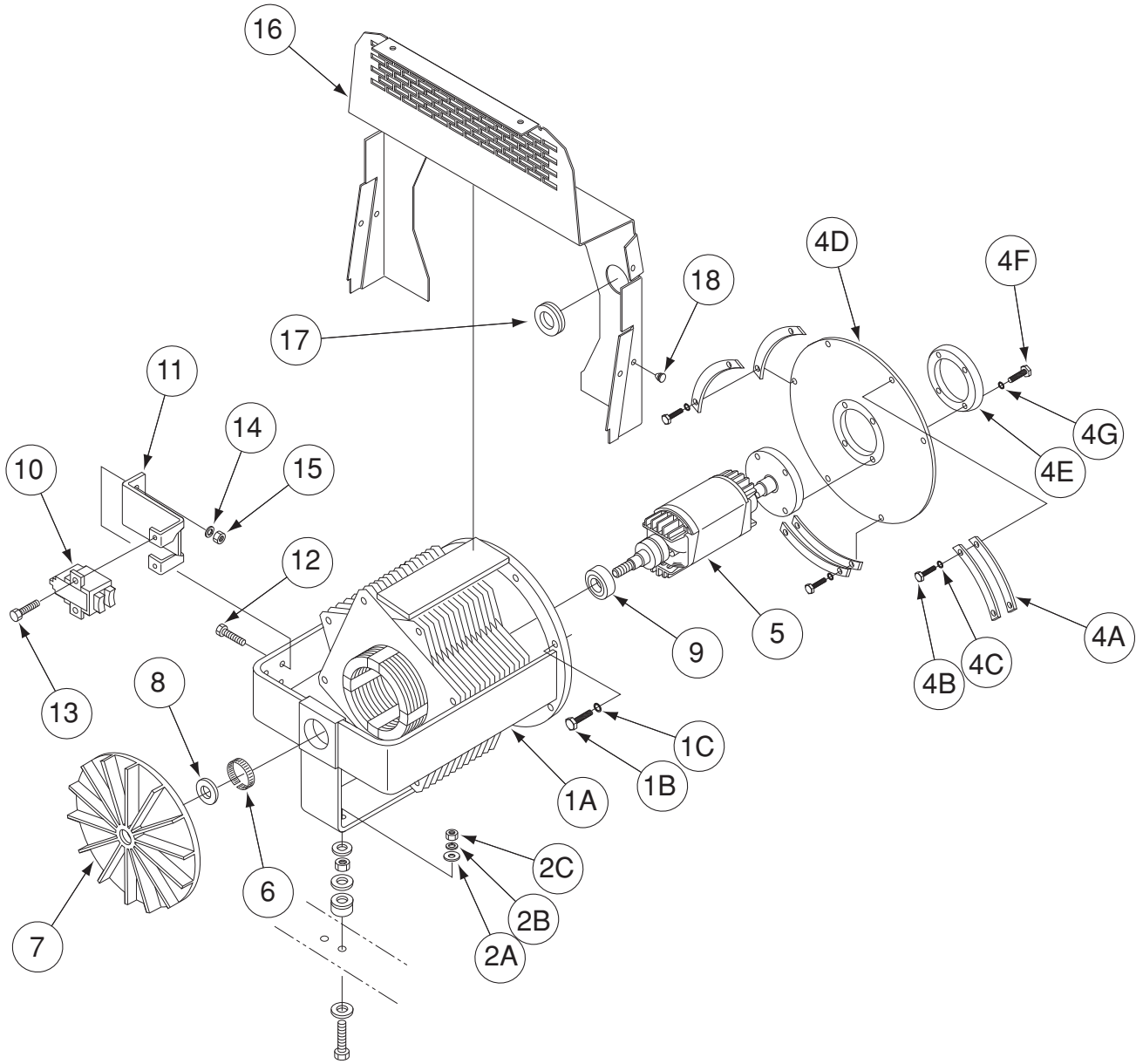
Use only the parts marked "x" in the column under the heading number called for in the model index page.

ITEM	DESCRIPTION	PART NO.	QTY.	1	2	3	4	5	6	7	8	9
2A	Top Bezel	G3593	1	X	X	X	X	X				
2B	Self Tapping Screw (Not Shown)	S24738-1	4	X	X	X	X	X				
3A	Right Bezel	G3594-1	1	X	X	X	X	X				
3B	Self Tapping Screw (Not Shown)	S24738-1	2	X	X	X	X	X				
4A	Left Bezel	G3594-2	1	X	X	X	X	X				
4B	Self Tapping Screw (Not Shown)	S24738-1	2	X	X	X	X	X				
5	Switch, Push-Button	S13146-4	1	X	X	X	X	X				
6	Start Button	S13146-1	1	X	X	X	X	X				
7	Hour Meter-Miniature	S17475-3	1	X	X	X	X	X				
12	Knob	T10491-1	1	X	X	X	X	X				
13	"O" Ring (Not Shown)	T13483-7	2	X	X	X	X	X				
14	Connector & Lead Assembly, Includes:	M19685-4	1	X	X	X	X	X				
14A	Potentiometer (10K)	T10812-112	2	X	X	X	X	X				
14B	Potentiometer Spacer	S18280	2	X	X	X	X	X				
14C	Rotary Switch (Not Shown)	S16670-10	1	X	X	X	X	X				
15	Switch, Toggle, SPST	T10800-38	2	X	X	X	X	X				
15A	Sealing Boot (Not Shown)	S22061-4	2	•	•	X	X	X				
16	Nameplate, 305D- 50Hz/UK (G4578-1) (Part of G4578)	NSS	1	X	•	X	•	•				
16	Nameplate, 305D- 50Hz/Europe (G4579-1) (Part of G4579)	NSS	1	•	X	•	X	•				
16	Nameplate, 305D- 50Hz (G6435-1) (Part of G6435)	NSS	1	•	•	•	•	X				
17	Switch, Toggle, DPDT	T10800-36	1	X	X	X	X	X				
17A	Sealing Boot (Not Shown)	S22061-4	1	•	•	X	X	X				
18	Knob	T10491	2	X	X	X	X	X				
19	Front Door Nameplate	L11746-2	1	X	X	X	X	•				
19	Front Door Nameplate	L15010	1	•	•	•	•	X				
20A	Door Welded Assembly	L11185	1	X	X	X	X	X				
20B	Rivet (Not Shown)	T12584-6	2	X	X	X	X	X				
21	Latch	S21033	1	X	X	X	X	X				
22A	Catch Bracket	S24659	1	X	X	X	X	X				
22B	Self Tapping Screw (Not Shown)	S8025-98	2	X	X	X	X	X				
23	Pilot Light	T13534-11	1	X	X	X	X	X				
24	Fastener Button	T14659-1	2	X	X	X	X	X				
25	Engine Service Decal (L12037-3) (Part of L12037)	NSS	1	X	X	•	•	•				
25	Engine Service Decal (L12922-3) (Part of L12922)	NSS	1	•	•	X	X	X				
26	Electric Fuel Gauge	S17585-1	1	X	X	X	X	X				
27	Toggle Switch	T10800-39	1	X	X	X	X	X				
27A	Sealing Boot (Not Shown)	S22061-4	1	•	•	X	X	X				
28	Plug & Lead Assembly (Not Shown)	S18250-889	1	X	X	X	X	X				
33	Circuit Breaker	T12287-22	5	X	X	X	X	X				
34	Sealing Boot	S22061-1	5	X	X	X	X	X				
35	Digital Weld Meter Kit, Includes: (35A thru 35E)	K2467-1	1	X	X	X	X	X				
35A	Meter Housing Asbly (L11160) (Includes Meter)	NSS	2	X	X	X	X	X				
35B	Meter Housing Seal (Not Shown)	S24630	2	X	X	X	X	X				
35C	Meter Bezel (Not Shown)	M19368	2	X	X	X	X	X				
35D	Lens (Not Shown)	T14807-9	2	X	X	X	X	X				
35E	#4-40 x .375 SS-PPNHS (Not Shown)	CF000389	4	X	X	X	X	X				
35F	#6-32 HN	CF000005	4	X	X	X	X	X				
35G	Plain Washer	S9262-3	4	X	X	X	X	X				



Index of Sub Assemblies
Sub Assembly Illustration
Index of Sub Assemblies
Sub Assembly Illustration
Index of Sub Assemblies
Sub Assembly Illustration
Index of Sub Assemblies
Sub Assembly Illustration

Stator Rotor Assembly



Index of Sub Assemblies
Part Numbers

Index of Sub Assemblies
Part Numbers

Index of Sub Assemblies
Part Numbers

Index of Sub Assemblies
Part Numbers

Indicates a change this printing.

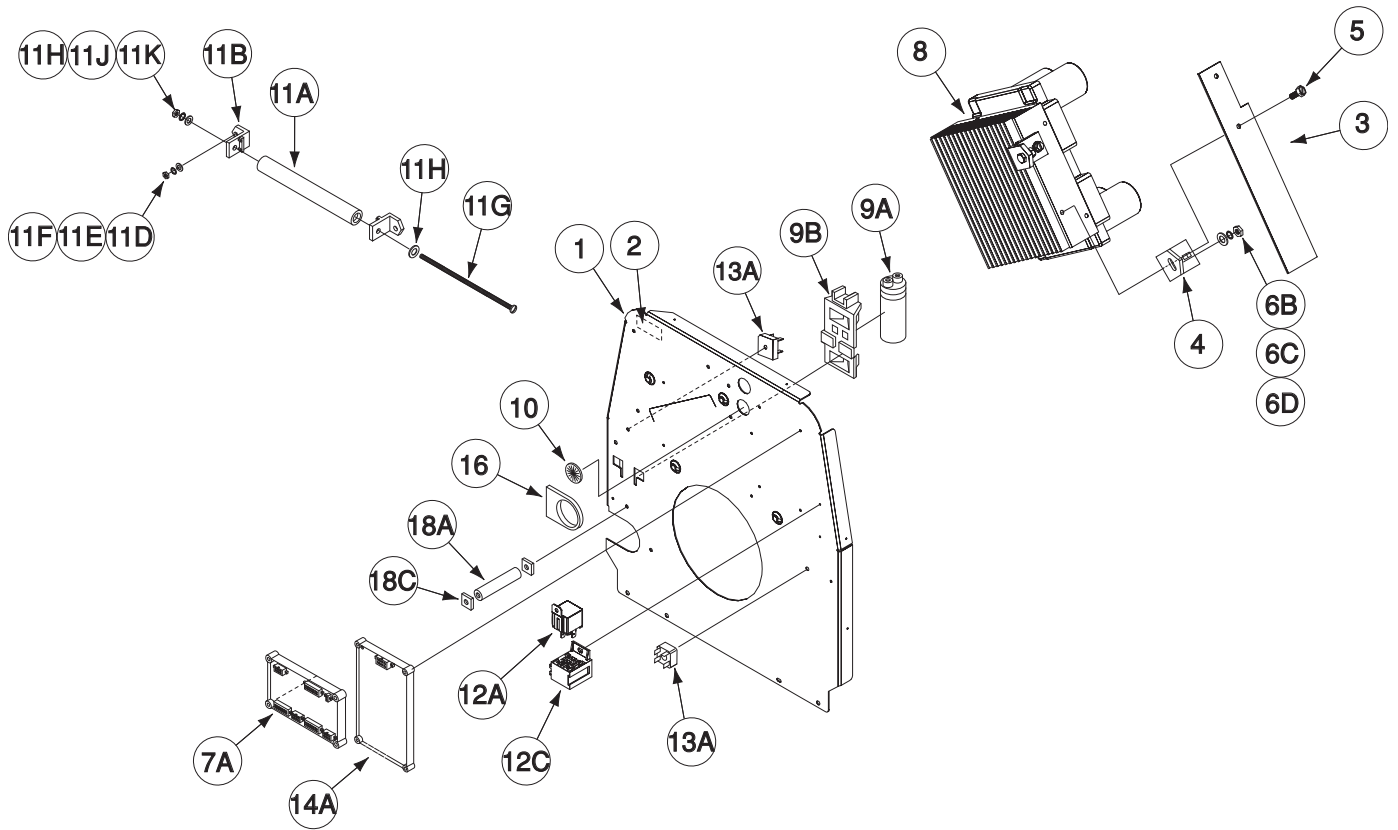
Use only the parts marked "x" in the column under the heading number called for in the model index page.

ITEM	DESCRIPTION	PART NO.	QTY.	1	2	3	4	5	6	7	8	9
1A	Stator Frame Assembly	G3930-3	1	X								
1B	3/8-16 x 1.25 HHCS	CF000105	8	X								
1C	Lock Washer	E106A-16	8	X								
2A	Plain Washer	S9262-120	2	X								
2B	Lock Washer	E106A-16	2	X								
2C	3/8-16 HN	CF000067	2	X								
4A	Disc Clamping Bar	S17895	6	X								
4B	5/16-18 x .875 HHCS	T8833-47	6	X								
4C	Lock Washer	E106A-14	6	X								
4D	Coupling Disc	M15012	1	X								
4E	Rotor Clamping Ring	S17896	1	X								
4F	5/16-24 x .875 HHCS	T8833-38	4	X								
4G	Lock Washer	E106A-14	4	X								
5	Rotor & Shaft Assembly	L11571-2	1	X								
6	Tolerance Ring	S18044-5	1	X								
7	Blower	L9033	1	X								
8	Plain Washer	S9262-149	1	X								
9	Bearing	M9300-85	1	X								
10	Brush & Brush Holder Assembly, Includes:	M16158	1	X								
	Brush Holder Cartridge	G2114	1	X								
	Brush Assembly	S19480	2	X								
	Brush Assembly Retainer	M16157	1	X								
11	Brush Holder Bracket	M18336	1	X								
12	Self Tapping Screw	S8025-91	2	X								
13	1/4-20 x 1.00 HHCS	CF000015	2	X								
14	Lock Washer	E106A-2	2	X								
14A	Flat Washer	S9262-98	2	X								
15	1/4-20 HN	CF000017	2	X								
16	Firewall	G3404	1	X								
17	Bushing	T12380-1	1	X								
18	Door Bumper	T14882-1	2	X								



Index of Sub Assemblies
 Sub Assembly Illustration
 Index of Sub Assemblies
 Sub Assembly Illustration
 Index of Sub Assemblies
 Sub Assembly Illustration
 Index of Sub Assemblies
 Sub Assembly Illustration

Blower Baffle Assembly



Index of Sub Assemblies

Part Numbers

Index of Sub Assemblies

Part Numbers

Index of Sub Assemblies

Part Numbers

Index of Sub Assemblies

Part Numbers

Indicates a change this printing.

Use only the parts marked "x" in the column under the heading number called for in the model index page.

ITEM	DESCRIPTION	PART NO.	QTY.	1	2	3	4	5	6	7	8	9
1	Blower Baffle Assembly, Includes:	G4097-9	1	X	•							
	Blower Baffle Assembly, Includes:	G4097-10	1	•	X							
	Baffle	G3862-1	1	X	X							
2	Warning Decal	T13086-163	1	X	X							
3	Baffle	S24624	1	X	X							
4	Heat Sink Holder	S22168	3	X	X							
5	Thread Forming Screw (Cutting)	S9225-17	3	X	X							
6A	Thread Forming Screw (Cutting) (Not Shown)	S9225-17	3	X	X							
6B	Plain Washer	S9262-98	3	X	X							
6C	Lock Washer	E106A-2	3	X	X							
6D	1/4-20 HN	CF000017	3	X	X							
7A	Weld Control PC Board Assembly	G4107-[]	1	X	•							
7A	Weld Control PC Board Assembly	G5507-[]	1	•	X							
7B	Self Tapping Screw (Not Shown)	S8025-100	4	X	X							
8	Chopper Board Assembly	L11845-[]	1	X	X							
9A	Capacitor	S13490-114	1	X	X							
9B	Capacitor Bracket	L9250	1	X	X							
10	Bushing	T14614-1	1	X	X							
11A	Resistor	S10404-138	1	X	X							
11B	Heat Sink Holder	S22168	2	X	X							
11C	Thread Forming Screw (Cutting) (Not Shown)	S9225-17	2	X	X							
11D	Plain Washer	S9262-98	2	X	X							
11E	Lock Washer	E106A-2	2	X	X							
11F	1/4-20 HN	CF000017	2	X	X							
11G	#10-24 x 7.50 RHS	CF000191	1	X	X							
11H	Plain Washer	S9262-27	2	X	X							
11J	Lock Washer	E106A-1	1	X	X							
11K	#10-24 HN	CF000010	1	X	X							
12A	Relay, DPDT 12-VDC AG-C100	S14293-14	1	X	•							
12A	Relay, SPDT 12-VDC	S14293-20	1	•	X							
12B	Self Tapping Screw (Not Shown)	S8025-91	2	X	X							
12C	Socket, Relay	S14531-5	1	•	X							
13A	Diode Bridge, 35A, 400V, FW 1PH	T13637-6	2	X	X							
13B	#10-24 x .75 RHS (Not Shown)	CF000072	2	X	X							
13C	#10-24 HN (Not Shown)	CF000010	2	X	X							
13D	Lock Washer (Not Shown)	E106A-1	2	X	X							
13E	Plain Washer (Not Shown)	S9262-27	2	X	X							
14A	Pull Coil PC Board Assembly	L11768-[]	1	X	X							
14B	Self Tapping Screw (Not Shown)	S8025-100	4	X	X							
15A	Thread Forming Screw (Not Shown)	S9225-76	1	X	X							
15B	Plain Washer (Not Shown)	S9262-27	2	X	X							
15C	#10-24 HN (Not Shown)	CF000010	2	X	X							
15D	Lock Washer (Not Shown)	E106A-1	1	X	X							
15E	Lock Washer (Not Shown)	T9695-1	1	X	X							
16	Grommet	S18543-5	1	X	X							
17	Thread Forming Screw (Cutting) (Not Shown)	S9225-68	1	X	X							
18A	Resistor	S10404-132	1	X	X							
18B	#10-24 x 3.00 RHS (Not Shown)	CF000009	1	X	X							
18C	Insulating Washer	T4479-A	2	X	X							
18D	Plain Washer (Not Shown)	S9262-27	1	X	X							

Index of Sub Assemblies
 Sub Assembly Illustration
 Index of Sub Assemblies
 Sub Assembly Illustration
 Index of Sub Assemblies
 Sub Assembly Illustration
 Index of Sub Assemblies
 Sub Assembly Illustration

Indicates a change this printing.

Use only the parts marked "x" in the column under the heading number called for in the model index page.

ITEM	DESCRIPTION	PART NO.	QTY.	1	2	3	4	5	6	7	8	9
18E	Lock Washer (Not Shown)	E106A-1	1	X	X							
18F	#10-24 HN (Not Shown)	CF000010	1	X	X							

Note: When ordering new printed circuit boards indicate the dash number [] of the "Old" board that is to be replaced. This will aid Lincoln in supplying the correct and latest board along with any necessary jumpers or adapters. The dash number brackets [] have purposely been left blank as to eliminate errors, confusion and updates.



Index of Sub Assemblies
 Sub Assembly Illustration
 Index of Sub Assemblies
 Sub Assembly Illustration
 Index of Sub Assemblies
 Sub Assembly Illustration
 Index of Sub Assemblies
 Sub Assembly Illustration

NOTES

Index of Sub Assemblies

Index of Sub Assemblies

Index of Sub Assemblies

Index of Sub Assemblies

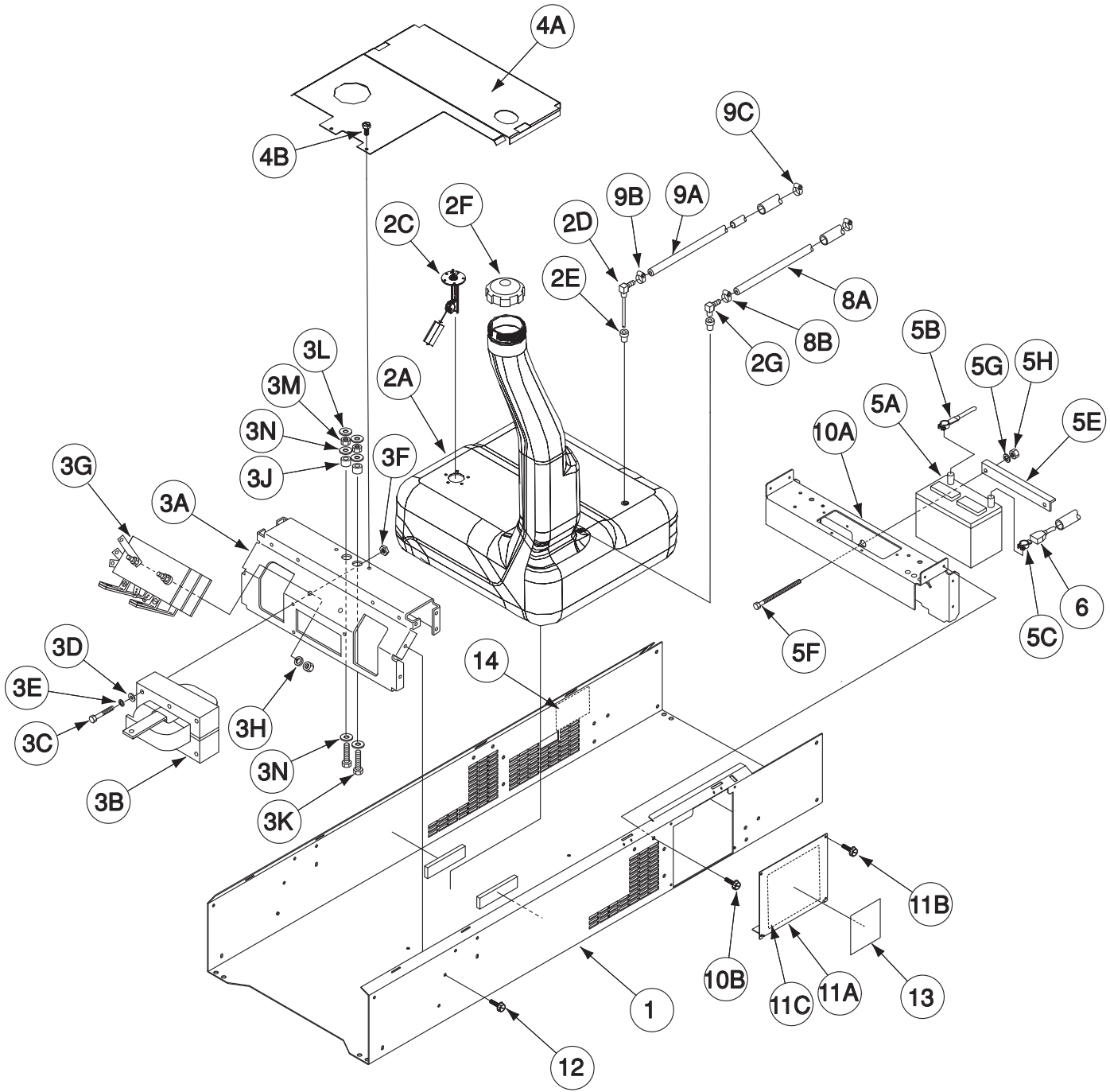
RANGER® 305D (CE)



Base, Fuel Tank, Battery Assembly

Index of Sub Assemblies
Index of Sub Assemblies
Index of Sub Assemblies
Index of Sub Assemblies

Part Numbers
Part Numbers
Part Numbers
Part Numbers



Indicates a change this printing.

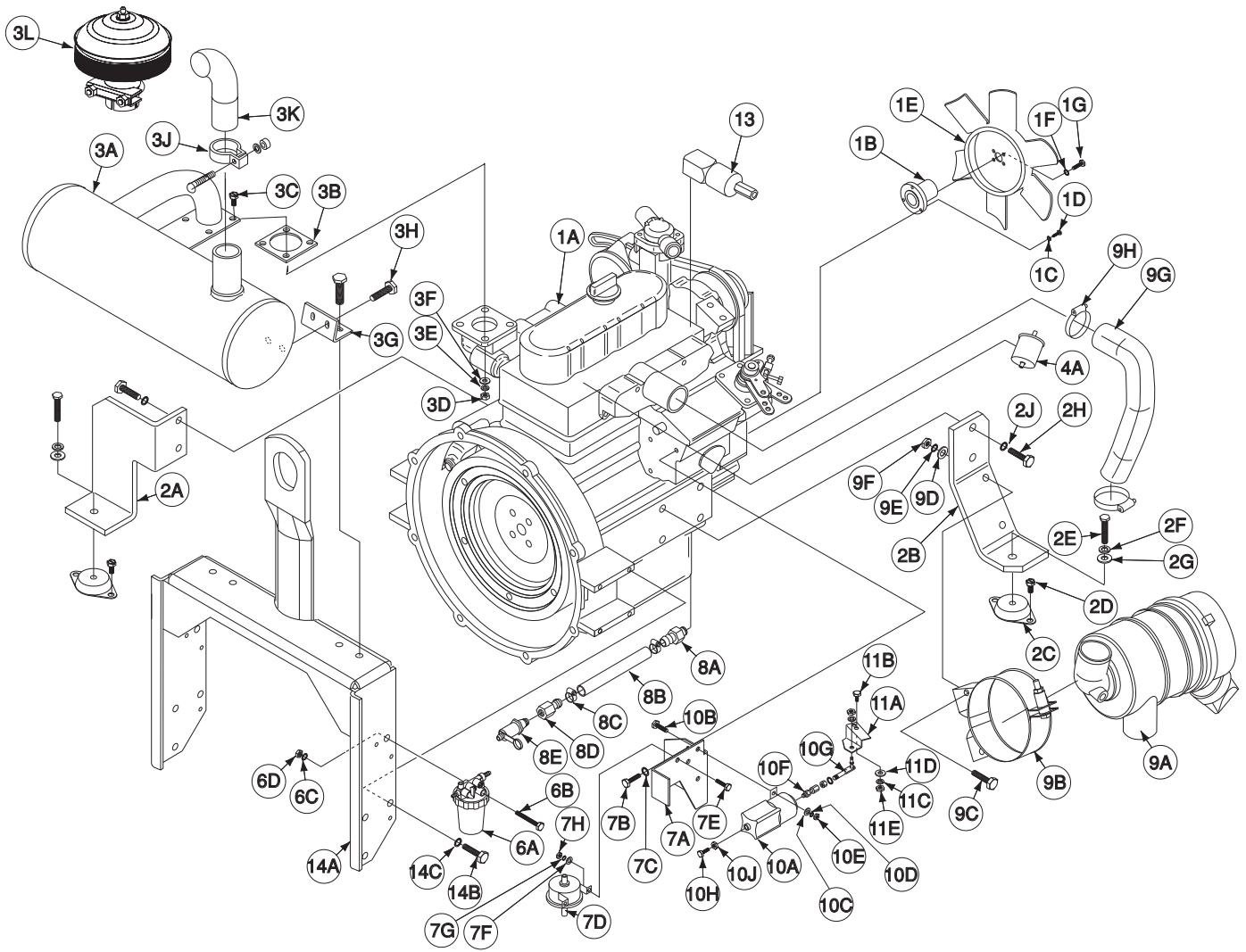
Use only the parts marked "x" in the column under the heading number called for in the model index page.

ITEM	DESCRIPTION	PART NO.	QTY.	1	2	3	4	5	6	7	8	9
1	Base	G3925-1	1	X	X							
2	Fuel Tank Assembly, Includes:	L12164-2	1	X	X							
2A	Fuel Tank	NSS	1	X	X							
2C	Fuel Sender	M20302	1	X	X							
2D	Fuel Pick-Up Tube Assembly	S19565-4	1	X	X							
2E	Rubber Plug	S19563	2	X	X							
2F	Fuel Cap	S20541	1	X	X							
2G	Fuel Fitting, Return	S19564	1	X	X							
3	Rectifier, Choke, Stator Support Assembly, Includes:	L11135-3	1	X	X							
3A	Stator Support Bracket	L11010	1	X	X							
3B	Choke Assembly	M19416	1	X	X							
3C	5/16-18 x 2.75 HHCS	CF000187	3	X	X							
3D	Plain Washer	S9262-121	1	X	X							
3E	Lock Washer	E106A-14	3	X	X							
3F	5/16-18 HN	CF000029	3	X	X							
3G	Three Phase Bridge Rectifier	L11132-3	1	X	X							
3H	Lock Washer	E106A-14	2	X	X							
3J	Rubber Mounting	S24344	2	X	X							
3K	3/8-16 x 2.50 HHB	CF000196	2	X	X							
3L	Plain Washer	S9262-113	2	X	X							
3M	3/8-16 HN	CF000067	2	X	X							
3N	Plain Washer	S9262-47	4	X	X							
4A	Fuel Tank Brace	G4003-1	1	X	X							
4B	Thread Forming Screw	S9225-68	2	X	X							
5A	12 Volt Storage Battery (M9399-14)	NSS	1	X	X							
5B	Battery Cable (Negative)	S8070-28	1	X	X							
5C	Battery Cable (Positive)	S8070-11	1	X	X							
5D	Plastic Cap (Not Shown)	T14654	1	X	X							
5E	Battery Bracket	S22018	1	X	X							
5F	Carriage Bolt	T11827-45	2	X	X							
5G	Lock Washer	E106A-2	2	X	X							
5H	1/4-20 HN	CF000017	2	X	X							
6	Battery Terminal Cover	S20191-1	1	X	X							
8A	Fuel Hose (Return)	T10642-257	1	X	X							
8B	Hose Clamp	S10888-35	2	X	X							
9A	Fuel Hose (Supply Tank to Main Fuel Filter)	T10642-65	1	X	X							
9B	Hose Clamp	S10888-35	1	X	X							
9C	Hose Clamp	T13777-5	1	X	X							
10A	Engine Cross Support	L11643	1	X	X							
10B	Thread Forming Screw (Cutting)	S9225-68	1	X	X							
11A	Battery Access Door	M19770	1	X	X							
11B	Thread Forming Screw (Cutting)	S9225-68	4	X	X							
11C	Acoustical Foam	M15045-78	1	X	X							
12	Thread Forming Screw (Cutting)	S9225-68	4	X	X							
13	Decal - Caution	S17851	1	X	X							
14	Oil Drain Procedure Decal (L12037-2) (Part of L12037)	NSS	1	X	•							
14	Oil Drain Procedure Decal (L12922-2) (Part of L12922)	NSS	1	•	X							



Index of Sub Assemblies
 Sub Assembly Illustration
 Index of Sub Assemblies
 Sub Assembly Illustration
 Index of Sub Assemblies
 Sub Assembly Illustration
 Index of Sub Assemblies
 Sub Assembly Illustration

Engine Assembly



Indicates a change this printing.

Use only the parts marked "x" in the column under the heading number called for in the model index page.

ITEM	DESCRIPTION	PART NO.	QTY.	1	2	3	4	5	6	7	8	9
1A	Engine (M19989) (KUBOTA)	NSS	1	X	•	•	•					
1A	Engine (M20503) (KUBOTA)	NSS	1	•	X	X	•					
1A	Engine (M21505) (KUBOTA)	NSS	1	•	•	•	X					
1B	Fan Coupling Hub (Kubota)	S25211	1	X	X	X	X					
1C	Lock Washer	E106A-14	3	X	X	X	X					
1D	Metric Screw (M8 x 1.25 x 25)	T14731-11	3	X	X	X	X					
1E	Fan, Pusher (350mm) (Supplied w/Engine)	(Note 1)	1	X	X	X	X					
1F	Lock Washer	E106A-2	4	X	X	X	X					
1G	1/4-20 x .75 HHCS	CF000014	4	X	X	X	X					
1H	Flat Washer (Not Shown)	S9262-98	4	X	X	X	X					
2A	Left Engine Foot	L11885-2	1	X	X	X	X					
2B	Right Engine Foot	T11885-1	1	X	X	X	X					
2C	Rubber Mounting	T11991-3	2	X	X	X	X					
2D	Thread Forming Screw	S9225-26	4	X	X	X	X					
2E	3/8-16 x 1.25 HHCS	T8833-62	2	X	X	X	X					
2F	Lock Washer	E106A-16	2	X	X	X	X					
2G	Plain Washer	S9262-120	2	X	X	X	X					
2H	HHCS (M10 x 1.25 x 25)	T14731-30	4	X	X	X	X					
2J	Lock Washer	S17400-1	4	X	X	X	X					
3A	Muffler Asbly (Includes M20062-9 Gasket)	G4247	1	X	X	•	•					
3A	Muffler Asbly (Includes M20062-9 Gasket)	G4247-1	1	•	•	X	X					
3B	Exhaust Gasket (Supplied w/Engine) (M20062-9)	(Note 1)	1	X	X	X	X					
3C	M8 x 1.25 x 25mm Bolt (Supplied w/Engine)	(Note 1)	4	X	X	X	X					
3D	M8 Nut (Supplied w/Engine)	(Note 1)	4	X	X	X	X					
3E	Spring Washer (M8) (Supplied w/Engine)	(Note 1)	4	X	X	X	X					
3F	Flat Washer	S9262-121	4	X	X	X	X					
3G	Muffler Bracket	S25496	1	X	X	X	X					
3H	Thread Forming Screw	S9225-26	4	X	X	X	X					
3J	Clamp (Includes Fasteners)	S20462	1	X	X	•	•					
3K	Outlet Pipe Elbow	M16980-1	1	X	X	•	•					
3L	Spark Arrestor	K1847-1	1	•	•	X	X					
4A	Inline Fuel Filter (Supplied w/Engine)	(Note 1)	1	X	X	X	X					
6A	Main Fuel Filter/Sedimenter (Supplied w/Engine)	(Note 1)	1	X	X	X	X					
6B	5/16-18 x 2.50 HHCS	CF000187	1	X	X	X	X					
6C	Lock Washer	E106A-14	1	X	X	X	X					
6D	5/16 HN	CF000029	1	X	X	X	X					
7A	Solenoid & Fuel Pump Bracket	L11898	1	X	X	X	X					
7B	Screw M8 x 1.25 12 HHCS	T14731-14	2	X	X	X	X					
7C	Lock Washer	E106A-14	2	X	X	X	X					
7D	Fuel Pump, Electric (Supplied w/Engine)	(Note 1)	1	X	•	•	•					
7E	1/4-20 x .75 HHCS	CF000014	2	X	•	•	•					
7F	Plain Washer	S9262-98	2	X	•	•	•					
7G	Lock Washer	E106A-2	2	X	•	•	•					
7H	1/4-20 HN	CF000017	2	X	•	•	•					
7J	Plain Washer	S9262-121	2	X	•	•	•					
7K	Thread Forming Screw (Not Shown)	S9225-28	1	X	•	•	•					
8A	Adapter Fitting	S25362-2	1	X	X	X	X					
8B	5/8 ID Drain Hose	T10642-264	1	X	X	X	X					
8C	Hose Clamp	S10888-27	2	X	X	X	X					
8D	Adapter Fitting	S25362-1	1	X	X	X	X					
8E	Oil Drain Valve	S24662	1	X	X	X	X					

NSS - Not Sold Separately

RANGER® 305D (CE)

08-06-2009

Note 1-See Kubota Parts List. Supplied by Engine Manufacturer.



Index of Sub Assemblies
Sub Assembly Illustration
Index of Sub Assemblies
Sub Assembly Illustration
Index of Sub Assemblies
Sub Assembly Illustration
Index of Sub Assemblies
Sub Assembly Illustration

Indicates a change this printing.

Use only the parts marked "x" in the column under the heading number called for in the model index page.

ITEM	DESCRIPTION	PART NO.	QTY.	1	2	3	4	5	6	7	8	9
9A	Air Cleaner Housing & Element	M19801-1	1	X	X	X	X					
9B	Air Cleaner Mounting Band	S25230	1	X	X	X	X					
9C	5/16-18 x 1.00 HHCS	CF000062	2	X	X	X	X					
9D	Plain Washer	S9262-121	2	X	X	X	X					
9E	Lock Washer	E106A-14	2	X	X	X	X					
9F	5/16-18 HN	CF000029	2	X	X	X	X					
9G	Air Intake Hose	M20061	1	X	X	X	X					
9H	Hose Clamp	S10888-29	2	X	X	X	X					
10A	Solenoid Assembly, Idler	S20140-3	1	X	X	X	X					
10B	1/4-20 x .75 HHCS	CF000014	2	X	X	X	X					
10C	Plain Washer	S9262-98	2	X	X	X	X					
10D	Lock Washer	E106A-2	4	X	X	X	X					
10E	1/4-20 HN	CF000017	2	X	X	X	X					
10F	In-Line Swivel	S22070	1	X	X	X	X					
10G	Governor Ball Joint	S10623-2	1	X	X	X	X					
10H	Hex Head Cap Screw	T8833-51	1	X	X	X	X					
10J	1/4-28 HN	CF000198	3	X	X	X	X					
11A	Governor Arm Bracket	S25108	1	X	X	X	X					
11B	1/4-20 x .75 HHCS	CF000014	1	X	X	X	X					
11C	Lock Washer	E106A-2	1	X	X	X	X					
11D	Plain Washer	S9262-98	1	X	X	X	X					
11E	1/4-20 HN	CF000017	1	X	X	X	X					
13	Shutdown Solenoid (Supplied w/Engine)	(Note 1)	1	X	X	X	X					
14A	Lift Bale Assembly	L11880	1	X	X	X	X					
14B	3/8-16 x .75 HHCS	CF000034	6	X	X	X	X					
14C	Lock Washer	E106A-16	6	X	X	X	X					
15	Fuel Hose (9.0") (Not Shown) (Main Filter to Fuel Pump)	T10642-256	1	X	•	•	•					
	Hose Clamp (Not Shown)	T13777-5	2	X	•	•	•					
16	Fuel Hose (4.0") (Not Shown) (Fuel Pump to In-Line Filter)	T10642-67	1	X	•	•	•					
	Hose Clamp (Not Shown)	T13777-5	2	X	•	•	•					
17	Fuel Hose (9.0") (Not Shown) (In-Line Filter to Engine)	T10642-256	1	X	X	X	X					
	Hose Clamp (Not Shown)	T13777-5	2	X	X	X	X					
18	Fuel Hose (17.0") (Not Shown) (Main Filter to Mechanical Fuel Pump)	T10642-65	1	•	X	X	X					
	Hose Clamp	T13777-5	2	•	X	X	X					
19	Fuel Hose (9.0) (Not Shown) (Mechanical Pump to in-line Filter)	T10642-256	1	•	X	X	X					
	Hose Clamp (Not Shown)	T13777-5	2	•	X	X	X					

Note 1-See Kubota Parts List. Supplied by Engine Manufacturer.

RANGER® 305D (CE)

08-06-2009



Index of Sub Assemblies
Sub Assembly Illustration

NOTES

Index of Sub Assemblies

Index of Sub Assemblies

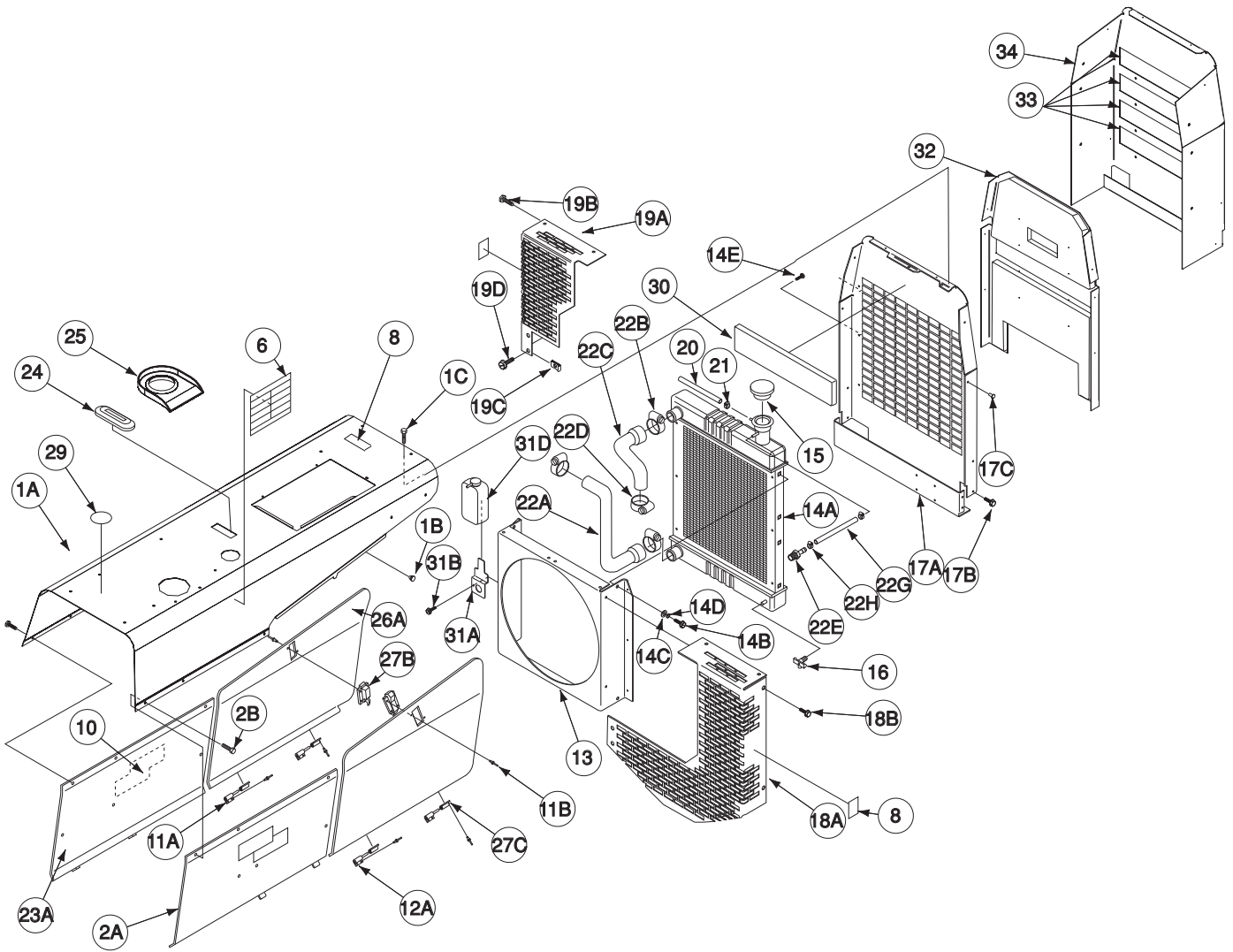
Index of Sub Assemblies

Index of Sub Assemblies

RANGER® 305D (CE)



Covers & Case Back Assembly



Indicates a change this printing.

Use only the parts marked "x" in the column under the heading number called for in the model index page.

ITEM	DESCRIPTION	PART NO.	QTY.	1	2	3	4	5	6	7	8	9
1A	Roof Assembly	G4405-8	1	X	X	X	X	X	X	X	X	•
1A	Roof Assembly	G4405-13	1	•	•	•	•	•	•	•	•	X
1C	Thread Forming Screw	S9225-68	16	X	X	X	X	X	X	X	X	•
1C	Thread Forming Screw (SS)	S24739-27	16	•	•	•	•	•	•	•	•	X
1D	Noise Decal & CE Logo (L12037-4 Part of L12037) (Not Shown)	NSS	1	X	X	X	X	•	•	•	•	•
1D	Noise Decal & CE Logo (L12922-4 Part of L12922) (Not Shown)	NSS	1	•	•	•	•	X	X	X	X	X
2A	Case Side-Right Assembly	G4405-2	1	X	X	X	X	X	X	X	X	•
2A	Case Side-Right Assembly	G4405-9	1	•	•	•	•	•	•	•	•	X
2B	Thread Forming Screw	S9225-68	3	X	X	X	X	X	X	X	X	•
2B	Thread Forming Screw (SS)	S24739-27	3	•	•	•	•	•	•	•	•	X
5	Fuel Warning Decal (Not Shown)	T13086-26	1	X	X	X	X	X	X	X	X	X
6	Warning Label (International)	L8064-1	1	X	X	X	X	X	X	X	X	X
8	Warning Decal	T13086-62	3	X	X	X	X	X	X	X	X	X
9	Wiring Diagram (Not Shown)	G4572	1	X	•	•	•	•	•	•	•	•
9	Wiring Diagram (Not Shown)	G4573	1	•	X	•	•	•	•	•	•	•
9	Wiring Diagram (Not Shown)	G4572-1	1	•	•	X	•	X	•	•	•	•
9	Wiring Diagram (Not Shown)	G4573-1	1	•	•	•	X	•	X	•	•	•
9	Wiring Diagram (Not Shown)	G4572-2	1	•	•	•	•	•	•	X	•	X
9	Wiring Diagram (Not Shown)	G4573-2	1	•	•	•	•	•	•	•	X	•
10	Logo Decal	S11893-4	2	X	X	X	X	X	X	X	X	•
10	Logo Decal	S27368-5	2	•	•	•	•	•	•	•	•	X
11A	Hinge Assembly	S24295-1	2	X	X	X	X	X	X	X	X	X
11B	Rivet	T12584-9	4	X	X	X	X	X	X	X	X	X
12A	Hinge Assembly	S24295-2	2	X	X	X	X	X	X	X	X	X
12B	Rivet (Not Shown)	T12584-9	2	X	X	X	X	X	X	X	X	X
13	Fan Shroud	G4245	1	X	X	X	X	X	X	X	X	X
14A	Radiator	G3115-1	1	X	X	X	X	X	X	X	X	X
14B	Thread Forming Screw	S9225-26	4	X	X	X	X	X	X	X	X	X
14C	Plain Washer	S9262-121	4	X	X	X	X	X	X	X	X	X
14D	Lock Washer	E106A-14	4	X	X	X	X	X	X	X	X	X
14E	Thread Forming Screw	S9225-68	6	X	X	X	X	X	X	X	X	X
15	Radiator Cap	S9970-2	1	X	X	X	X	X	X	X	X	X
16	Drain Cock	T9956	1	X	X	X	X	X	X	X	X	X
17A	Case Back	G4243	1	X	X	X	X	X	X	X	X	X
17B	Thread Forming Screw	S9225-68	8	X	X	X	X	X	X	X	X	X
17C	Fastener Button	T14659-1	4	X	X	X	X	X	X	X	X	X
18A	Fan Guard (Right)	G4058-1	1	X	X	X	X	X	X	X	X	X
18B	Thread Forming Screw	S9225-68	4	X	X	X	X	X	X	X	X	X
19A	Fan Guard (Left)	G4060-1	1	X	X	X	X	X	X	X	X	X
19B	Thread Forming Screw	S9225-68	4	X	X	X	X	X	X	X	X	X
19C	Speed Nut	T11525-5	2	X	X	X	X	X	X	X	X	X
19D	Thread Forming Screw	S9225-66	2	X	X	X	X	X	X	X	X	X
20	Over Flow Hose (Radiator to Coolant Bottle)	T10642-236	1	X	X	X	X	X	X	X	X	X
21	Hose Clamp (Over Flow Hose)	T13777-5	2	X	X	X	X	X	X	X	X	X
22A	Lower Radiator Hose	L11881	1	X	X	X	X	X	X	X	X	X
22B	Hose Clamp	S10888-16	2	X	X	X	X	X	X	X	X	X
22C	Upper Radiator Hose	M20064	1	X	X	X	X	X	X	X	X	X
22D	Hose Clamp	S10888-16	2	X	X	X	X	X	X	X	X	X
22E	Hose Fitting, Brass	S25524	1	X	X	X	X	X	X	X	X	X
22G	Flex Hose (Ref. Thermostat to Radiator)	T10642-263	1	X	X	X	X	X	X	X	X	X
22H	Clamps	S10888-35	2	X	X	X	X	X	X	X	X	X

NSS - Not Sold Separately

RANGER® 305D (CE)

08-06-2009



Index of Sub Assemblies
 Sub Assembly Illustration
 Index of Sub Assemblies
 Sub Assembly Illustration
 Index of Sub Assemblies
 Sub Assembly Illustration
 Index of Sub Assemblies
 Sub Assembly Illustration

Indicates a change this printing.

Use only the parts marked "x" in the column under the heading number called for in the model index page.

ITEM	DESCRIPTION	PART NO.	QTY.	1	2	3	4	5	6	7	8	9
23A	Case Side-Left Assembly	G4405-3	1	X	X	X	X	X	X	X	X	•
23A	Case Side-Left Assembly	G4405-10	1	•	•	•	•	•	•	•	•	X
23B	Thread Forming Screw (Not Shown)	S9225-68	3	X	X	X	X	X	X	X	X	•
23B	Thread Forming Screw (SS) (Not Shown)	S24739-27	3	•	•	•	•	•	•	•	•	X
24	Cover Seal	S12934	1	X	X	X	X	X	X	X	X	X
25	Fuel Trough	L12084	1	X	X	X	X	X	X	X	X	X
26A	Left Engine Cover Assembly	G4405-5	1	X	X	X	X	X	X	X	X	•
26A	Left Engine Cover Assembly	G4405-12	1	•	•	•	•	•	•	•	•	X
27A	Right Engine Cover Assembly	G4405-4	1	X	X	X	X	X	X	X	X	•
27A	Right Engine Cover Assembly	G4405-11	1	•	•	•	•	•	•	•	•	X
29	Warranty Decal	Part of L12037	1	X	X	X	X	X	X	X	X	X
30	Foam	M15045-40	1	X	X	X	X	X	X	X	X	X
31A	Bracket, Coolant Recovery Bottle	S25514	1	X	X	X	X	X	X	X	X	X
31B	Thread Forming Screw	S9225-68	2	X	X	X	X	X	X	X	X	X
31C	Bushing (Not Shown)	T12380-1	1	X	X	X	X	X	X	X	X	X
31D	Coolant Recovery Bottle (Supplied w/Engine)	(Note 1)	1	X	X	X	X	X	X	X	X	X
31E	PVC Coolant Drain Hose (Not Shown)	(Note 1)	1	X	X	X	X	X	X	X	X	X
32A	Sound Panel Assembly	G4405-6	1	X	X	X	X	X	X	X	X	X
32B	Thread Forming Screw	S9225-68	6	X	X	X	X	X	X	X	X	X
33A	Sound Baffle Assembly	G4405-7	4	X	X	X	X	X	X	X	X	X
33B	Thread Forming Screw	S9225-68	4	X	X	X	X	X	X	X	X	X
34A	Case Back	G4243-1	1	X	X	X	X	•	•	•	•	•
34A	Case Back Assembly	G5639	1	•	•	•	•	X	X	X	X	X
34B	Thread Forming Screw	S9225-68	12	X	X	X	X	X	X	X	X	X
35	Green Initiative Decal (Not Shown)	S28039-3	1	•	•	•	•	•	•	•	•	X

Note 1-See Kubota Parts List. Supplied by Engine Manufacturer.

RANGER® 305D (CE)

08-06-2009



Index of Sub Assemblies
 Sub Assembly Illustration
 Index of Sub Assemblies
 Sub Assembly Illustration
 Index of Sub Assemblies
 Sub Assembly Illustration
 Index of Sub Assemblies
 Sub Assembly Illustration